

# 2025 Statement of Qualifications

## Renewable Energy Engineering Services

Leading the solar industry with  
over **24GW** of engineered plants



**Eland**  
Mojave, California





# Company Overview



Blymyer Engineers has delivered multidisciplinary engineering services to industrial and commercial clients worldwide since 1961.

## A 64-year track record of success.

We have been active in commercial and utility-scale solar power projects since 2003, including utility, agricultural, educational, municipal, and commercial applications.

We completed our first commercial PV project in 2003. Since then, we have designed well over 24GW of ground-mounted fixed and single-axis tracker systems as well as canopy-mounted and roof-mounted systems for utility, agricultural, educational, municipal, and commercial applications. We offer the following:



### Specialized knowledge

In-house engineers licensed in over 43 states and a contracting affiliate with A, B, and C-10 licenses. Unparalleled experience with California Division of the State Architect. Multiple designs with precheck approval.



### Understanding PV economics, including up-front and long-term costs

We'll find the balance that is right for your project. We can identify alternatives that save time and money.



### Optimized system performance

Best practices for site evaluations, production modeling, layout, balance-of-system engineering, racking, tracking, foundations, conduit and wire management, and performance monitoring to maximize your production.



### Excellent relationships

Strong relations with vendors, utility representatives, permitting authorities, developers, EPC contractors, and integrators facilitate the smooth completion of your project.

Choose Blymyer Engineers for end-to-end renewable engineering services



Solar



EV charging



Energy storage



Wind



Substations

## Renewable Energy Engineering Services

On projects ranging in scope from a simple site inspection or structural review to design of an entirely new facility, we offer assistance at each stage: preliminary site selection and feasibility analysis, conceptual design, detailed design, permitting, construction, and start-up. Our services include:



Solar power engineering



Electrical engineering



Structural engineering



Mechanical engineering



Total project management



Project planning and scheduling



Cost estimating



Constructibility review



Value engineering



Construction management



Preliminary site selection



Feasibility study



Energy modeling



Production analysis



Regulatory review



Permitting



Contractor prequalification



Bidding and bid analysis



Contract administration

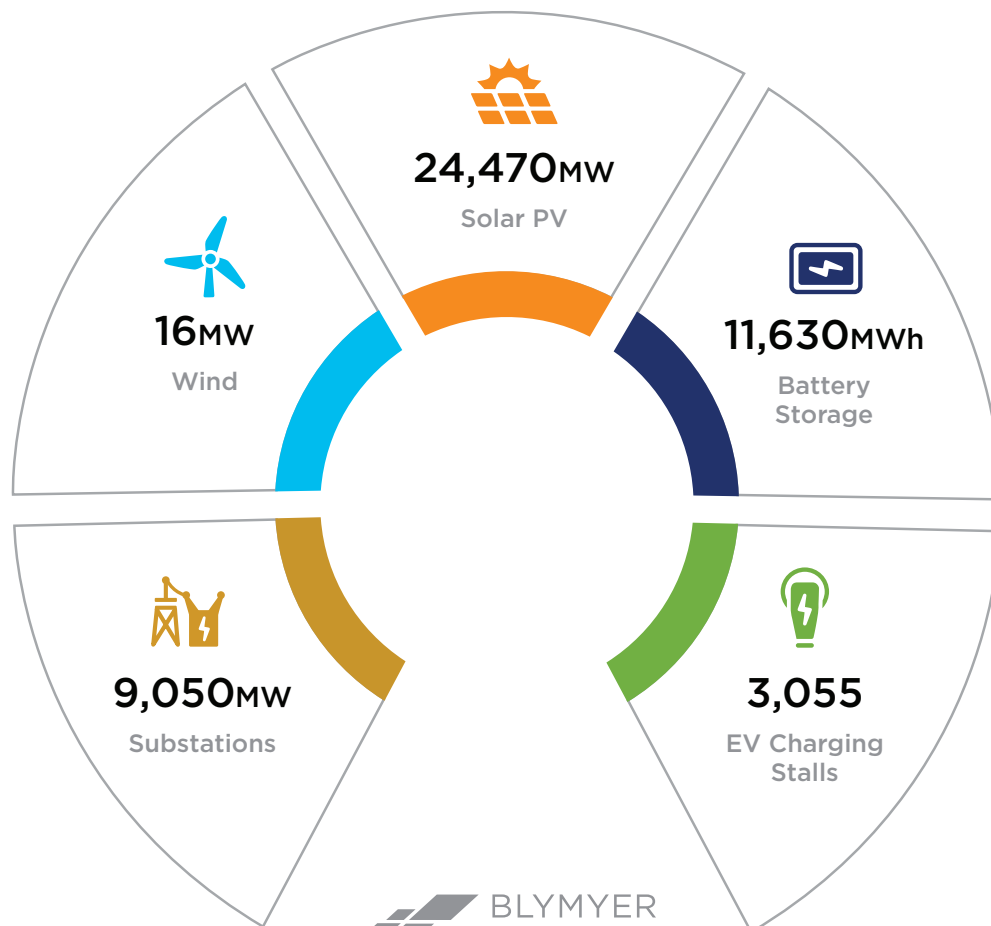


Equipment procurement

# Largest solar portfolio in the United States



Leading the solar industry with over **24GW** of engineered plants



 BLYMYER  
ENGINEERS

Renewable Energy Engineering

Updated AUGUST 2025



## Engineering leader for renewable projects worldwide

Blymyer Engineers completed its first solar project in 2003. Outpacing the industry, we've engineered more than 24GW since then. That represents a significant part of the United States total solar capacity. Clients choose the Blymyer team for our experience.



Working around the clock for you,  
Blymyer Engineers is licensed in 43 states.

Electrical | Mechanical | Structural | Civil | Environmental

Our European office includes skilled engineers who support all of our U.S. and international projects so we can deliver exceptional service around the clock.

## Representative Partners and Clients



SUNPOWER®



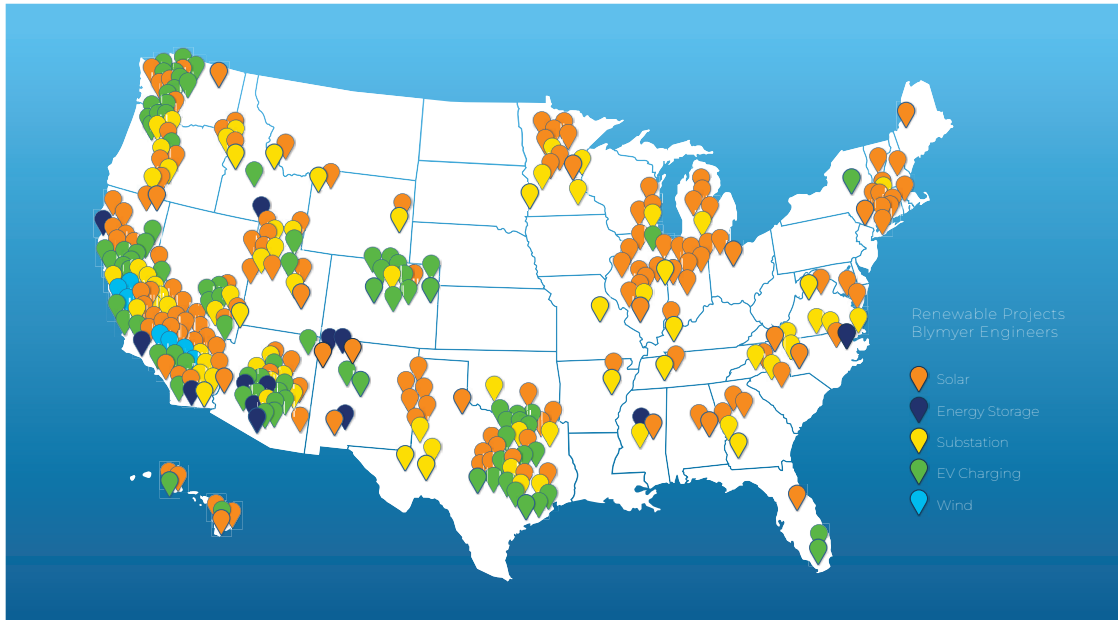
Blymyer Engineers is actively involved with these leading industry associations





## Exceptional service around the clock

Blymyer Engineers is an innovative leader in engineering design for renewable energy projects across the country and around the world.



### Our staff—your project partners

Dedicated and passionate about our work, Blymyer's engineers provide clients with exceptional quality service and results. Our engineers are licensed in 43 states. Longstanding relationships with architects, developers, commercial and industrial clients, and renewable energy companies across the United States allow us to maximize efficiency and ensure reliable outcomes.



 **24GW** of Engineered Solar Plants  
Largest Solar Portfolio in the United States

# Renewable Energy Engineering—Services

## Solar



Excellence in Solar Engineering —  
On the forefront of solar technology  
with hundreds of projects in  
43 states and 5 countries.



## Energy Storage



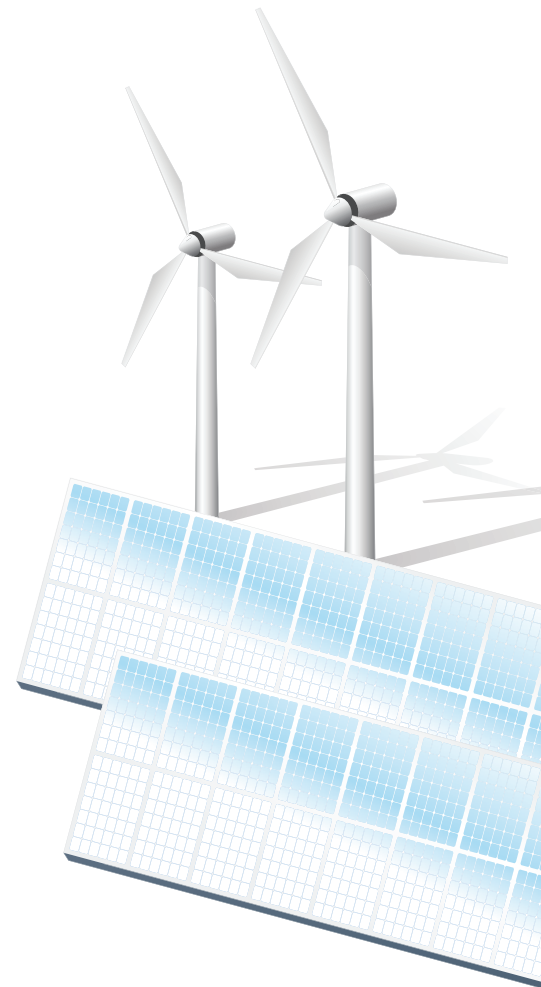
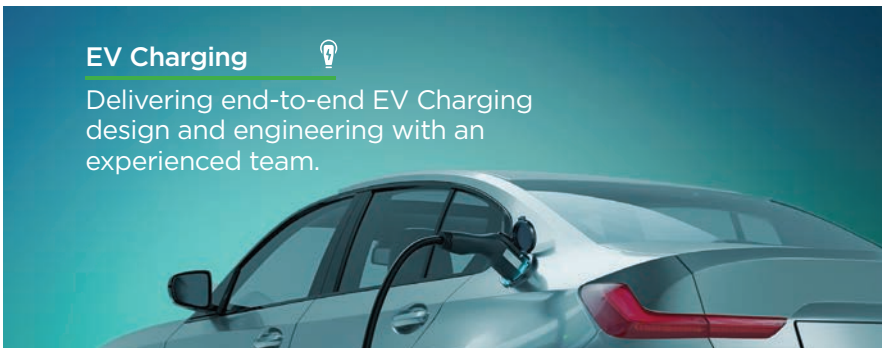
Powering the future with Battery Energy Storage Systems  
(BESS) and amplifying the benefits of renewable energy  
generation.



## EV Charging



Delivering end-to-end EV Charging  
design and engineering with an  
experienced team.





# Engineering a more Sustainable World

## Choose Blymyer Engineers for end-to-end renewable engineering services

Blymyer Engineers brings solar, storage, substation, EV charging, and wind projects from analysis and feasibility studies through engineering design and construction.

Our multidisciplinary firm includes electrical, mechanical, structural, environmental, and civil engineers versed in all aspects of renewable energy engineering.

Meticulous attention to detail and unparalleled customer service offer clients peace of mind and confidence in successful outcomes. Staying in the forefront of a rapidly growing and changing industry, Blymyer is creating a more sustainable world with technologically advanced solutions.



# Utility-Scale Solar—Services



Adams-Nielson

## **BLYMYER ENGINEERS' SERVICES INCLUDE:**

- Feasibility studies
- Energy analysis/modeling
- Conceptual design
- Design development
- Cost estimates
- Construction documentation
- Project management
- Construction management
- Commissioning

## **THE VALUE OF VISION AND EXPERIENCE:**

- Specialized knowledge
- Understanding of energy economics, including up-front and long-term costs
- Optimized design and highest-quality installation



## Utility-Scale Solar (SAMPLE PROJECTS)



**Taygete 1 & 2 | Pecos County, Texas | 500MW**



**Solar Blue | Stratford, California | 250MW**



**Prospero 1 & 2 | Andrews, Texas | 550MW**



**Big Plain | Madison County, Ohio | 196MW**



**Elara Solar | Pearsall, Texas | 130MW**



**Eland | California City, CA | 200MW**



## Utility-Scale Solar (SAMPLE PROJECTS)



**Oberon 1 & 2 | California | 500 MW**



**Springbok I and II Solar Plants |  
Kern County, CA | 258MW**



**SMUD: McKenzie, Kammerer, Bruceville,  
and Dillard | 69MW**



**Mammoth North | Indiana | 400MW**



**RE Barren Ridge | Kern County, CA |  
60MW**



**Red Horse Solar | 55MW**



## Utility-Scale Solar (PARTIAL LIST)

<b>Snowflake</b>	Arizona	475MW	Electrical Engineering and Substation Design	2025
<b>Tormes</b>	Texas	355MW	Electrical and Structural Engineering, Substation Design	2025
<b>Nightfall</b>	Texas	180MW	Electrical and Structural Engineering, Substation Design	2025
<b>El Dorado 2</b>	Illinois	120MW	Electrical and Structural Engineering, Substation Design	2025
<b>Pelican Jaw</b>	California	440MW	Electrical and Structural Engineering, Substation Design	2025
<b>Thousand Mile</b>	Texas	300MW	Electrical and Structural Engineering	2024
<b>Santa Teresa</b>	New Mexico	150MW	Electrical and Structural Engineering	2024
<b>Stillhouse</b>	Texas	210MW	Electrical and Structural Engineering, Substation Design	2024
<b>Carne</b>	New Hampshire	130MW	Electrical and Structural Engineering,	2024
<b>Cherry Valley</b>	Arizona	135MW	Electrical and Structural Engineering, Substation Design	2024
<b>Ash Creek</b>	Texas	408MW	Electrical and Structural Engineering, Substation Design	2023
<b>Harquahala</b>	Arizona	450MW	Electrical and Structural Engineering	2023
<b>Franklin</b>	Idaho	100MW – PV 240MWh – BESS	Electrical and Structural Engineering, Storage Design	2023
<b>Kiowa</b>	Oklahoma	100MW	Electrical and Structural Engineering, Substation Design	2023
<b>Eldorado</b>	Illinois	159MW	Electrical and Structural Engineering, Substation Design	2023
<b>San Juan</b>	New Mexico	200MW - PV 400MWh - BESS	Electrical and Structural Engineering	2023
<b>Eiffel</b>	Texas	240MW	Electrical and Structural Engineering	2023
<b>Big Plain</b>	Ohio	196MW	Electrical and Structural Engineering, Substation Design	2023
<b>Oberon 1 &amp; 2</b>	California	500MW – PV 1000MWh – BESS	Electrical and Structural Engineering, Storage Design	2022
<b>Solar Blue</b>	California	250MW – PV 900MWh – BESS	Electrical and Structural Engineering, Substation and Storage Design	2022
<b>Arica</b>	California	263MW – PV 544MWh – BESS	Electrical and Structural Engineering, Substation and Storage Design	2022
<b>Victory Pass</b>	California	200MW – PV 200MWh – BESS	Electrical and Structural Engineering, Substation and Storage Design	2022
<b>Jackpot</b>	Idaho	120MW	Electrical and Structural Engineering	2022
<b>Brazoria County</b>	Texas	200MW	Electrical Engineering, Structural Engineering, Substation Design	2022
<b>Atlanta Farms</b>	Texas	200MW	Electrical and Structural Engineering,	2022
<b>Steel</b>	Utah	80MW	Electrical and Structural Engineering, Substation Design	2022
<b>Highland</b>	Ohio	300MW	Electrical and Structural Engineering	2022
<b>Bartonville</b>	Virginia	96MW	Electrical and Structural Engineering,	2021
<b>Riverfork</b>	Mississippi	149MW	Electrical and Structural Engineering	2021

## Utility-Scale Solar (PARTIAL LIST)

<b>Eland</b>	California	200MW	Electrical and Structural Engineering	2021
<b>Sandy Branch</b>	Texas	230MW	Electrical and Structural Engineering, Substation Design	2021
<b>Rocket</b>	Utah	80MW	Electrical and Structural Engineering, Substation Design	2021
<b>Brazoria West</b>	Texas	200MW	Electrical and Structural Engineering, Substation Design	2021
<b>Big River</b>	Illinois	80MW	Electrical and Structural Engineering	2021
<b>Aquamarine</b>	California	250MW	Electrical and Structural Engineering, Substation Design	2021
<b>Prospero 1 &amp; 2</b>	Texas	550MW on 2 sites	Electrical and Structural Engineering,	2021
<b>Muscle Shoals</b>	Alabama	227MW	Electrical and Structural Engineering, Substation Design	2021
<b>Impact</b>	Texas	200MW	Electrical and Structural Engineering,	2020
<b>Taygete 1 &amp; 2</b>	Texas	500MW on 2 sites	Electrical and Structural Engineering, Substation Design	2020
<b>Pioneer</b>	Colorado	80MW	Electrical and Structural Engineering, Substation Design	2020
<b>Hunter</b>	Utah	100MW	Electrical and Structural Engineering, Substation Design	2020
<b>Prairie Wolf</b>	Illinois	200MW	Electrical and Structural Engineering, Substation Design	2020
<b>Cove Mountain</b>	Utah	180MW	Electrical and Structural Engineering	2020
<b>Wright</b>	California	200MW	Electrical and Structural Engineering	2019
<b>Sweetwater</b>	Wyoming	80MW	Electrical and Structural Engineering	2019
<b>Mount Signal 2</b>	California	153MW	Electrical and Structural Engineering, Substation Design	2019
<b>Bay Wa Solar</b>	North Carolina	46MW on 4 sites	Electrical and Structural Engineering	2017
<b>AL Solar A Project</b>	Alabama	72MW	Electrical and Structural Engineering, Substation Design	2017
<b>Buckthorn Solar</b>	Texas	150MW	Electrical and Structural Engineering	2017
<b>Clenera Grand View Solar</b>	Idaho	80MW	Electrical and Structural Engineering	2017
<b>Coronal-GCSCI Eglin Solar, Holley Solar, Saufley Solar</b>	Florida	123.75MW	Electrical and Structural Engineering	2017
<b>North Star</b>	Chisago County, MN	100MW	Electrical and Structural Engineering	2016
<b>AREP</b>	Cattnall, GA	80MW	Electrical and Structural Engineering	2016
<b>Three Peaks</b>	Three Peaks, UT	80MW	Electrical and Structural Engineering	2016
<b>DE Shaw - Springbok II Solar</b>	Cantil, CA	150MW	Electrical and Structural Engineering	2016
<b>Springbok 1 Solar</b>	Kern County, CA	107.1MW	Electrical and Structural Engineering	2016
<b>Red Hill Solar</b>	Parowan, UT	80MW	Electrical and Structural Engineering	2015
<b>Red Horse</b>	Red Horse, AZ	55MW	Electrical and Structural Engineering	2016
<b>K-Road Moapa</b>	Moapa, NV	250MW	Electrical and Structural Engineering	2014
<b>Rosamond 2</b>	Lancaster, CA	20MW	Electrical and Structural Engineering	2013
<b>Kansas South Solar</b>	Sacramento, CA	20MW	Electrical and Structural Engineering	2012

UPDATED: 8-01-2025



# Distributed-Generation Solar—Services



Hawaii Department of Education, HI  
4,500 kWAC total

## **BLYMYER ENGINEERS' SERVICES INCLUDE:**

- Initial feasibility studies
- Energy modeling and analysis
- Conceptual design
- Design development
- Detailed cost estimates
- Construction documentation
- Permitting
- Project management
- Construction management
- Design/build
- Commissioning



## Distributed-Generation Solar (SAMPLE PROJECTS)



**State Fund | 8 Sites | 10.6MW**



**Qatar Science & Technology Park |  
Doha, Qatar| 700kW**



**Walmart | 7 locations | Central California |  
2.8MW**



**SMUD | McKenzie, Kammerer,  
Bruceville, and Dillard | 69MW**



**U.S. Veterans Administration Hospital |  
FL and CA | 5.7MW**



**U.S. Marine Corps Base Housing |  
Camp Lejeune, NC | 5.4MW**



## Distributed-Generation Solar (SAMPLE PROJECTS)



**County of Shasta, CA | 16 Sites | 2.5MW**



**UC Davis West Village | Davis, CA | 340kW**



**City of Brea, CA | 2MW**



**Energy Conservation Measures |  
City of San Jose, CA**



**Hawaii Department of Education |  
4,500kW Total**



**California Institute of Technology |  
Pasadena, CA | 1.4MW**

# Distributed-Generation Solar (PARTIAL LIST)

Community Hospital	San Bernadino, CA	701kW	Canopy Mount	Electrical Engineering	2024
LA County Sanitation	Palmdale, CA	3.3MW	Single Axis	Electrical Engineering	2024
LA County Sanitation	Lancaster, CA	5.85MW	Single Axis	Electrical Engineering	2024
VTA Cerone Bus Yard	Santa Clara, CA	500kW	Canopy Mount	Electrical Engineering	2024
Bakersfield Truck Charging Facility	Bakersfield, CA	3.6MV	Ground Mount	Electrical and Structural Engineering	2024
Adventist Health	Delano, CA	2.23MV	Ground Mount	Electrical Engineering	2024
Dominican Hospital	Santa Cruz, CA	970kW	Canopy Mount	Electrical Engineering	2023
Workday 2 sites	Pleasanton, CA	1.06MW	Canopy/Roof	Electrical Engineering	2023
Adventist Health	Willits, CA	885kW	Canopy	Electrical Engineering	2023
Adventist Health	Tehachapi, CA	1.51MW	Canopy/Ground	Electrical Engineering	2023
Galesburg	Galesburg, IL	975kW	Single Axis Tracker	Electrical Engineering	2022
Cahokia Camp Jackson	Cahokia, IL	1,918kW	Single Axis Tracker	Electrical Engineering	2022
Cahokia Bond	Centreville, IL	1,591kW	Single Axis Tracker	Electrical Engineering	2022
City of Milpitas 2 sites	Milpitas, CA	219kW	Canopy Mount	Electrical Engineering	2021
American Canyon 3 sites	California	939.6kW	Roof Mount Canopy Mount	Electrical Engineering	2021
County of Shasta 16 sites	California	2.5MW	Canopy Mount	Electrical Engineering	2020
San Francisco, West Mosconi	California	1MW	Roof Mount	Electrical Engineering	2020
State Fund 8 sites	California	10.6MW	Canopy Mount	Electrical Engineering	2020
Placer County 7 sites	California	3.9MW	Canopy Mount	Electrical Engineering	2020
Adventist Health 10 sites	California	11MW	Canopy Mount	Electrical Engineering	2019
Artemis	Massachusetts	2,190kW	Roof Mount	Electrical Engineering	2018
New Brunswick 7 sites	Greenstreet, NY	1,800kW	Roof Mount Canopy Mount	Electrical Engineering	2018
Contra Costa	California	448kW	Canopy Mount	Electrical Engineering	2018
Monterey Airport	Monterey, CA	862kW	Single-Axis Tracking	Electrical Engineering	2017
Contra Costa County Fire Protection District 4 sites	Contra Costa County, CA	752kW	Ground, Canopy, & Roof Mount	Electrical Engineering	2017
Broadway Plaza	Walnut Creek, CA	1,000kW	Roof Mount Canopy Mount	Electrical Engineering, Project Management, Construction Support	2016
MGM Arena	Las Vegas, NV	980kW	Roof Mount	Civil, Structural, and Electrical Engineering	2016
City of Geneseo	Geneseo, IL	1,000kW		Electrical and Structural Engineering	2016

# Distributed-Generation Solar (PARTIAL LIST)

<b>City of Salinas 6 sites, 8 systems</b>	Salinas, CA	3,700kW	Canopy Mount Ground Mount	Electrical Engineering and Project Management	2015
<b>RNI1</b>	Waianae, HI	500kW		Interconnection Study, Inverter Specification, Single- and 3-Line diagrams, HECO approval	2015
<b>Crystal View Apartments</b>	Garden Grove, CA	1,086kW	Roof Mount	Electrical Engineering	2015
<b>City of San Jose 14 sites</b>	San Jose, CA	N/A	Various	Engineering for Solar PV, Solar Thermal Systems, Micro Co-Generation, HVAC, Data Efficiency, and Water Conservation Projects	2015
<b>Hawaii Dept. of Education 40 campuses</b>	Oahu, HI	3,000kW	Canopy Mount Roof Mount	Complete Design Engineering Package	2015
<b>City of Waterford 3 sites</b>	Waterford, CA	297.95kW	Ground, Canopy & Roof Mount	Complete Engineering Package, Construction Administration Services	2014
<b>Honolulu RAC PV</b>	Honolulu, HI	2,000kW	Canopy Mount	Specifications, Peer Review	2013
<b>UC Davis West Village Phase 3</b>	Davis, CA	740kW	Canopy Mount Roof Mount	Electrical Engineering, Structural Engineering	2013
<b>Qatar Science &amp; Technology Park</b>	Doha, Qatar	700kW	Canopy Mount	Electrical Engineering, Design Specification, Structural Engineering	2013
<b>Walmart 7 stores</b>	Central California	2,800kW	Roof Mount	System Design, Structural Engineering, Electrical Engineering	2013
<b>Kings County Central Plant Parking Lot and Hanford Library</b>	Hanford, CA	900kW	Canopy Mount	Canopy Design, Structural Engineering, Electrical Engineering, DSA Approval, Permitting, Construction Phase Services	2012
<b>Santa Rita Jail Smart Grid Energy</b>	Dublin, CA	1,000kW	Battery System	Structural Analysis, Electrical Peer Review	2012
<b>U.S. Veteran's Administration Hospital</b>	Tampa, FL	1,900kW	Canopy Mount	Canopy Design, Structural Engineering	2012
<b>U.S. Veteran's Administration Hospital</b>	Martinez, CA	1,900kW	Canopy Mount	Canopy Design, Structural Engineering	2012
<b>U.S. Marine Corps Base Housing</b>	Camp Lejeune, NC	5,400kW	Canopy Mount	Canopy Design, Structural Engineering	2011
<b>Commercial PV</b>	Mammoth Lakes, CA	987kW	Ground Mount Tracking	Electrical Engineering	2011
<b>City of Brea 3 buildings</b>	Brea, CA	2,000kW	Roof Mount Canopy Mount	Conceptual Engineering, Geotech, Layout, Equipment Specifications, Canopy Design, Electrical Engineering, Structural Engineering	2011
<b>U.S. Border Patrol Station</b>	Calexico, CA	266kW	Ground Mount Single-Axis Tracking	Electrical Engineering, Permitting	2010
<b>California Institute of Technology</b>	Pasadena, CA	1,400kW	Roof Mount	Structural Engineering, Construction Phase Support, Permitting	2010
<b>Humane Society of Silicon Valley</b>	Milpitas, CA	390kW	Ground Mount	Engineering Design, Including Electrical, Structural and Lighting	2010
<b>Commercial PV Array, Lockheed Martin Space Systems</b>	Sunnyvale, CA	800kW	Roof Mount	AC Electrical Installation, Main Panel Upgrade, Data Acquisition System Installation	2008
<b>Agricultural PV Array, Farm ACW</b>	Fallbrook, CA	2,000kW	Ground Mount	Design Consulting, Installation and Commissioning	2006
<b>Idyllwild Water District</b>	Idyllwild, CA	43kW	Ground Mount	Design Consulting, Installation and Commissioning	2005
<b>Agricultural PV Array, Seley Citrus Ranch</b>	Borrego Springs, CA	267 kW	Ground Mount	Design/Build	2004



# DSA Solar—Services



Merritt College, Oakland, California, 1.2 MW

## **BLYMYER ENGINEERS' SERVICES INCLUDE:**

- Initial feasibility studies
- Energy modeling and analysis
- Conceptual design
- Design development
- Detailed cost estimates
- Construction documentation
- Permitting
- DSA approvals
- Project management
- Construction management
- Design/build
- Commissioning

## **MULTIDISCIPLINARY ENGINEERING SERVICES**

Blymyer Engineers has designed over 60 MW of solar projects for California schools. Since 2008, Blymyer has installed prechecked canopies at over 300 school sites in California. Our 5th-generation, prechecked canopy design meets all current DSA requirements and offers you the following advantages:

- Rapid permitting
- Lower costs
- Design for all soil, seismic, and wind conditions
- Prechecks include options for T and L structure designs
- Flexibility to accommodate any available modules

## DSA Solar (SAMPLE PROJECTS)



**Pinole Valley High School | 418kW**



**Lancaster Unified School District |  
23 schools, CA | 5.5MW**



**San Jose Unified School District |  
13 schools, CA | 7.2MW**



**Pittsburg Unified School District |  
13 schools, CA, | 4MW**



**Merritt College, CA | 1.2MW**



**Franklin-McKinley School District, CA |  
2.74MW**



## **DSA Solar** (SAMPLE PROJECTS)



**Butte Community College | CA | 411kW**



**Las Positas Community College |  
Chabot, CA | 2.2MW**



**Fremont Union School District |  
5 schools, CA | 6.6MW**



**Milpitas Unified School District |  
14 schools, CA | 3.4MW**



**Contra Costa Community College |  
3 colleges, CA | 3MW**



**Hayward Unified School District | CA |  
33 schools | 5.3MW**

## DSA Solar (PARTIAL LIST)

<b>Atwater ESD 8 Campuses</b>	Atwater, CA	1.59MW	Canopy Mount Ground Mount	DSA Services, Fire, Access, Electrical Engineering	2024
<b>San Mateo Foster City SD 12 Campuses</b>	San Mateo, CA	2.46MV	Canopy Mount	DSA Services, Fire, Access, Electrical Engineering	2024
<b>San Mateo UHSD 7 Campuses</b>	San Mateo, CA	2.38MV	Canopy and Roof Mount	DSA Services, Fire, Access, Electrical Engineering	2024
<b>Ventura USD 25 Campuses</b>	Ventura, CA	4.7MV	Canopy Mount	DSA Services, Fire, Access, Electrical Engineering	2024
<b>Cupertino USD 25 Campuses</b>	Cupertino, CA	5.2MV	Canopy Mount	DSA Services, Fire, Access, Electrical Engineering	2024
<b>Santa Rosa SD 20 campuses</b>	Santa Rosa, CA	3.94MW	Canopy Mount	DSA services, Fire, Access, Electrical Engineering	2023
<b>Central USD 5 campuses</b>	Fresno, CA	614kW	Canopy	DSA services, Fire, Access, Electrical Engineering	2023
<b>Milpitas High School</b>	Milpitas, CA	613kW	Canopy Mount	DSA services, Fire, Access, Electrical Engineering	2022
<b>Santa Barbara USD 14 campuses</b>	Santa Barbara and Goleta, CA	3151.5kW	Canopy Mount	DSA services, Fire, Access, Electrical Engineering	2022
<b>Greenfield USD 5 campuses</b>	Greenfield, CA	1.211.2kW	Canopy Mount	DSA services, Fire, Access, Electrical Engineering	2022
<b>Mountain View 10 sites</b>	California	1,628kW	Roof Mount Canopy Mount	Electrical Engineering	2021
<b>San Juan USD 3 campuses</b>	San Juan Bautista and Aromas, CA	467.8kW	Ground Mount Canopy Mount	DSA services, Fire, Access, Electrical Engineering, Structural Engineering	2021
<b>Pinole Valley HS</b>	Pinole, CA	418kW	Canopy Mount	DSA services, Fire, Access, Electrical Engineering	2020
<b>Tulare JUHSD 7 campuses</b>	Tulare, CA	3MW	Canopy Mount Roof Mount	DSA services, Fire, Access, Electrical Engineering	2020
<b>City of Hayward USD 33 campuses</b>	Hayward, CA	5.3MW	Canopy Mount	DSA services, Fire, Access, Electrical Engineering	2019
<b>North Monterey USD 7 campuses</b>	Monterey, CA	1.7MW	Canopy Mount	DSA services, Fire, Access, Electrical Engineering	2019
<b>Alpaugh USD</b>	Alpaugh, CA	345kW	Canopy Mount	DSA services, Fire, Access, Electrical Engineering	2018
<b>Gonzales USD 3 campuses</b>	Gonzales, CA	600kW	Canopy Mount	DSA services, Fire, Access, Electrical Engineering	2018
<b>Escalon USD 6 campuses</b>	Escalon, CA	1,285 kW	Canopy Mount Ground Mount	DSA services, Fire, Access, Electrical Engineering	2017
<b>Lennox USD 7 campuses</b>	Lennox, CA	2,200kW	Ground Mount Canopy Mount	DSA services, EOR, Fire, Access, Structural Engineering, Electrical Engineering	2017
<b>Coachella USD 17 campuses</b>	Coachella, CA	10,000kW	Ground Mount Canopy Mount	DSA services, EOR, Fire, Access, Structural and Electrical Engineering	2017
<b>Glendale USD 2 campuses</b>	Glendale, CA	1,148kW	Canopy Mount Roof Mount	Structural Engineering, Electrical Engineering	2017
<b>Berryessa Union School District 13 campuses</b>	San Jose, CA	2,255kW	Canopy Mount Ground Mount	DSA Approval, Structural Design, Construction Support	2016
<b>Glendale Unified SD 3 campuses</b>	Glendale, CA	373.87kW	Canopy Mount	Structural Engineering, DSA Approval	2014



# DSA Solar (PARTIAL LIST)

Franklin-McKinley SD 13 campuses	San Jose, CA	2,738kW	Canopy Mount Roof Mount	Structural and Electrical Engineering, Geotechnical Services, DSA Approval	2013
Visalia USD 12 campuses	Visalia, CA	2,350kW	Canopy Mount	Structural Approval, DSA Approval	2013
Jefferson ESD 15 campuses	Daly City, CA Colma, CA	1,208kW	Canopy Mount Ground Mount	Structural and Electrical Engineering, Geotechnical Services, Project Management, Construction Support	2013
Salinas City ESD 13 campuses	Salinas, CA	1,044kW	Canopy Mount	Structural and Electrical Engineering, Permitting	2013
Hartnell Community College	Salinas, CA	1,943kW	Canopy Mount Ground Mount	Structural and Electrical Engineering, Permitting	2013
Los Angeles Unified School District - 6 campuses	Los Angeles, CA	1,900kW	Canopy Mount Roof Mount	Structural and Electrical Engineering, Fire Access, Permits	2013
Oak Grove School District, Phase II 15 campuses	San Jose, CA	3,000kW	Canopy Mount	Structural and Electrical Engineering, DSA Permitting, Fire Access Approval	2013
Firebaugh Las Deltas Unified School District 3 campuses	Firebaugh, CA	1,300kW	Canopy Mount Roof Mount	Structural and Electrical Engineering, Fire Access, Permits	2013
Oak Grove School District Phase I 5 campuses	San Jose, CA	1,900kW	Canopy Mount Roof Mount	Canopy Design, Structural and Electrical Engineering, DSA Approval, Permitting, Construction Phase	2012
San Lorenzo Unified School District 8 campuses	San Lorenzo, CA	1,380kW	Canopy Mount Roof Mount	Canopy Design, Structural and Electrical Engineering, DSA Approval, Permitting, Construction Phase	2011
South San Francisco Unified School District - 15 campuses	South San Francisco, CA	2,500kW	Canopy Mount Roof Mount	Canopy Design, Structural and Electrical Engineering, DSA Approval, Permitting, Construction Phase	2011
Los Angeles Unified School District 8 campuses	Los Angeles, CA	2,000kW	Canopy Mount Roof Mount	Canopy Design, Structural and Electrical Engineering, DSA Approval, Permitting, Construction Phase	2011
Lancaster Unified School District	Lancaster, CA	5,500kW	Canopy Mount	Electrical Design and Engineering	2011
Chico Unified School District 3 campuses	Chico, CA	2,300kW	Canopy Mount	Structural and Electrical Engineering, ADA, Fire Access Plan, Permitting	2011
Foothill Community College	Palo Alto, CA	1,200kW	Canopy Mount	Engineering, Geotech, Layout, DSA Approval, Equipment Specifications	2011
Hayward Unified School District 8 campuses	Hayward, CA	2,760kW	Canopy Mount	Engineering, Geotech, Layout, DSA Approval, Equipment Specifications	2011
Morgan Hill Unified School District 2 campuses	Morgan Hill, CA	2,000kW	Canopy Mount	Canopy Design, Structural and Electrical Engineering, DSA Approval, Permitting, Construction Phase	2010
Pittsburg Unified School District 15 campuses	Pittsburg, CA	4,000kW	Canopy Mount	Canopy Design, Engineering, DSA Approval, Permitting, Construction Oversight	2010
East Side Unified High School District 12 campuses	San Jose, CA	7,500kW	Canopy Mount Roof Mount	Canopy Design, Structural and Electrical Engineering, DSA Approval, Permitting, Construction Phase	2010
Merritt College	Oakland, CA	1,200kW	Canopy Mount	Engineering, DSA Approval, Permitting, Construction Oversight	2010
Chabot Las Positas Community Colleges	Hayward and Livermore, Sunnyvale, CA	2,200kW	Canopy Mount	System Design, Installation Consulting, Equipment Specification and Commissioning	2009
Fremont Union School District - 5 campuses	Sunnyvale, CA	5,600kW	Canopy Mount Roof Mount	Engineering, Permitting and Project Management	2008
Milpitas Unified School District 14 campuses	Milpitas, CA	3,400kW	Ground Mount Parking Canopy	System Design, Installation Consulting, Equipment Specification and Commissioning	2008
DVC Community College	Pleasant Hill, CA	1,000kW	Ground Mount Parking Canopy	System Design, Installation Consulting, Equipment Specification and Commissioning, DSA Approval	2007



## **BLYMYER ENGINEERS' SERVICES INCLUDE:**

- Feasibility studies
- Site assessments
- Conceptual design
- Design development
- Detailed electrical design
- Cost estimates
- Detailed structural design
- Construction/permitting
- Project management
- Construction management
- Commissioning process



## Energy Storage (SAMPLE PROJECTS)



**Santa Ana Energy Storage | California |  
40MW/160MWh**



**Agua Fria | Glendale, Arizona |  
25MW/100MWh**



**Franklin | Rogerson, Idaho | 240MWh**



**Solar Blue | Stratford, California | 900MWh**



**Mira Loma/—Tesla | Ontario, CA |  
20MW/80MWh**



**Eland | California City, California**

## Energy Storage (PARTIAL LIST)

<b>Cherry</b>	King County, CA	600MWh	Electrical and Structural Engineering	2025
<b>Snowflake</b>	Navajo County, AZ	1.9GWh	Electrical and Structural Engineering	2025
<b>Maricopa 1 &amp; 2</b>	Maricopa County, AZ	2.2GWh	Electrical and Structural Engineering	2024
<b>Santa Teresa</b>	Dona Ana County, NM	600MWh	Electrical and Structural Engineering	2024
<b>Gaskell West</b>	Kern County, CA	86.5MWh	Electrical and Structural Engineering	2024
<b>Carne</b>	Luna County, NM	260MWh	Electrical and Structural Engineering	2024
<b>Arrowleaf</b>	Brawley, CA	140MWh	Electrical and Structural Engineering	2024
<b>Azalea</b>	Kern County, CA	152MWh	Electrical and Structural Engineering	2024
<b>Superstition</b>	Gilbert, AZ	90MW / 360MWh	Electrical and Structural Engineering	2023
<b>Stanton</b>	Stanton, CA	68.8MW / 275.2 MWh	Electrical and Structural Engineering	2023
<b>San Juan</b>	Kirkland, NM	100MW / 400MWh	Electrical and Structural Engineering	2023
<b>Oberon 1 &amp; 2</b>	California	1GWh	Electrical and Structural Engineering	2023
<b>Santa Ana</b>	Santa Ana, CA	40MW / 160MWh	Electrical and Structural Engineering	2023
<b>Chestnut</b>	California	540MWh	Electrical and Structural Engineering	2022
<b>Solar Blue</b>	California	900MWh	Electrical and Structural Engineering	2022
<b>Avion</b>	Pima County, AZ	15MW / 1MWh	Electrical and Structural Engineering	2022
<b>Bottleneck</b>	Richgrove, CA	94MW / 376MWh	Electrical Engineering	2022
<b>Pomona II</b>	Pomona, CA	20MW / 40MWh	Electrical Engineering	2021
<b>Tesla Glendale</b>	Glendale, AZ	25MW / 100MWh	Electrical and Structural Engineering	2021
<b>Tesla Westminster</b>	Westminster	4.5MWh	Electrical and Structural Engineering	2020
<b>Tesla Vallecito</b>	Carpinteria, CA	40MWh	Electrical and Structural Engineering	2020
<b>Tesla Silverstrand</b>	Camarillo, CA	44MWh	Electrical and Structural Engineering	2020
<b>Tesla Long Beach</b>	Long Beach, CA	10.8MWh	Electrical and Structural Engineering	2019
<b>Irvine Company 4 sites</b>	Irvine, CA	15.5MWh	Electrical and Structural Engineering	2019
<b>SK Hart</b>	Newport Beach, CA	3.7MWh	Electrical and Structural Engineering	2019
<b>Tesla Newport Gateway</b>	Irvine, CA	1.0MW / 6.72MWh	Electrical and Structural Engineering	2018
<b>Tesla Morgan Stanley</b>	San Francisco, CA	500kW / 1.26MWh	Electrical and Structural Engineering	2018
<b>Tesla Costa Mesa</b>	Costa Mesa, CA	1MW / 6.51MWh	Electrical and Structural Engineering	2018
<b>Tesla Mira Loma</b>	Ontario, CA	2 MW / 80MWh	Electrical and Structural Engineering	2017
<b>Tesla Port Hueneme</b>	Port Hueneme, CA	1MW / 2MWh	Electrical and Structural Engineering	2015
<b>CSU-Long Beach / Tesla</b>	Long Beach, CA	1MW / 2MWh	Electrical and Structural Engineering	2015
<b>Lathrop / Tesla</b>	Lathrop, CA	2MW / 4MWh	Electrical and Structural Engineering	2015

UPDATED: 8-01-2025



# EV Charging—Services



## **BLYMYER ENGINEERS' SERVICES INCLUDE:**

- Initial feasibility studies
- Energy modeling and analysis
- Conceptual design
- Design development
- Detailed cost estimates
- Construction documentation
- Permitting
- Project management
- Construction management
- Design/build
- Commissioning

## EV Charging Stations (SAMPLE PROJECTS)



**WattEV | Bakersfield, CA | 240-360kW**



**Tesla Alameda South Shore Center | Alameda, CA**



**EVgo Pacific Avenue | San Francisco, CA**



**Tesla City Center | San Francisco, CA**



**Tesla Firebaugh | Firebaugh, CA**



**Tesla Gateway 101 | East Palo Alto, CA**



## EV Charging Station (PARTIAL LIST)

EVgo	California	84 Stalls	Electrical and Structural Engineering	2025
EVgo	California	60 Stalls	Electrical and Structural Engineering	2024
Greenville Rd	California	28 Stalls	Electrical Engineering	2024
Bakersfield Truck Charging Facility	California	30 Stalls	Electrical and Structural Engineering	2024
EVgo	California	70 Stalls	Electrical and Structural Engineering	2023
EVgo	California	360 Stalls	Electrical and Structural Engineering	2022
EVgo	Texas	18 Stalls	Electrical and Structural Engineering	2022
EVgo	Arizona	42 Stalls	Electrical and Structural Engineering	2022
EVgo	Oregon	24 Stalls	Electrical and Structural Engineering	2022
EVgo	Washington	72 Stalls	Electrical and Structural Engineering	2022
Tesla	California	36 Stalls	Electrical and Structural Engineering, Utility Coordination	2021
Tesla	Hawaii	24 Stalls	Electrical and Structural Engineering, Utility Coordination	2021
EVgo	California	350 Stalls	Electrical and Structural Engineering, Utility Coordination	2021
EVgo	Colorado	11 Stalls	Electrical and Structural Engineering, Utility Coordination	2021
EVgo	Washington	16 Stalls	Electrical and Structural Engineering	2021
Rivian	Oregon	18 Stalls	Electrical and Structural Engineering	2021
Rivian	Arizona	12 Stalls	Electrical and Structural Engineering	2021
Rivian	California	70 Stalls	Electrical and Structural Engineering	2021
EVgo	California	231 Stalls	Electrical and Structural Engineering, Utility Coordination	2021
EVgo	Texas	22 Stalls	Electrical and Structural Engineering, Utility Coordination	2021
Tesla	California	108 Stalls	Electrical and Structural Engineering, Utility Coordination	2020
EVgo	California	131 Stalls	Electrical Engineering and Structural Engineering	2020
Tesla	Hawaii	18 Stalls	Electrical and Structural Engineering, Utility Coordination	2019
Tesla	California	184 Stalls	Electrical and Structural Engineering, Utility Coordination	2019
EVgo	California	66 Stalls	Electrical Engineering and Structural Engineering	2019
Tesla	California	256 Stalls	Electrical and Structural Engineering, Utility Coordination	2018



Pioneer Solar, Adams County, Colorado, 88.8 MVA, 34.5/115 kV

## **BLYMYER ENGINEERS' SERVICES INCLUDE:**

- Feasibility studies
- Site assessments
- Conceptual design
- Design development
- Detailed electrical design
- Cost estimates
- Detailed structural design
- Construction/permitting
- Project management
- Construction management
- Commissioning process



## Substations (SAMPLE PROJECTS)



**Central 40 | CA |**  
**52.5 MVA, 34.5/115kV**



**Solar Blue | Stratford, California |**  
**34.5/230kV, 250MVA**



**Mount Signal 2 Solar | CA |**  
**165 MVA, 34.5/230kV**



**Pioneer Solar | CO |**  
**88.8 MVA, 34.5/115kV**



**Muscle Shoals Solar | AL |**  
**250MVA, 34.5/161kV**



**Aquamarine | Stratford, CA |**  
**34.5/230kV and 320MVA**

## Substations (PARTIAL LIST)

<b>Tormes</b>	Texas	34.5/345kV	420MVA	Electrical and Structural Engineering	2025
<b>Wildflower II</b>	Mississippi	34.5/230kV	277MVA	Electrical and Structural Engineering	2025
<b>Nightfall</b>	Texas	34.5/138kV	222MVA	Electrical and Structural Engineering	2024
<b>Choctaw</b>	Oklahoma	34.5/138kV	120MVA	Electrical and Structural Engineering	2024
<b>Ash Creek</b>	Oklahoma Texas	34.5/345kV	408.85MVA	Electrical and Structural Engineering	2024
<b>Signal Ranch</b>	Texas	34.5/138kV	60MVA	Electrical and Structural Engineering	2024
<b>Azalea</b>	California	34.5/6kV	78MVA	Electrical and Structural Engineering,	2024
<b>El Dorado</b>	Illinois	34.5/138kV	360MVA	Electrical and Structural Engineering	2024
<b>Stillhouse</b>	Texas	34.5/345kV	240MVA	Electrical and Structural Engineering	2023
<b>Kiowa</b>	Oklahoma	34.5/138kV	100MVA	Electrical and Structural Engineering	2023
<b>Long Lake</b>	Arkansas	34.5/230kV	200MVA	Electrical and Structural Engineering	2023
<b>Show Me State</b>	Missouri	34.5/345kV	250MVA	Electrical and Structural Engineering	2023
<b>Bottleneck</b>	California	34.5/69kV	80MVA	Electrical and Structural Engineering	2022
<b>Superstition</b>	Arizona	34.5/230kV	90MVA	Electrical and Structural Engineering	2022
<b>Vikings</b>	California	34.5/230kV	129.6MVA	Electrical and Structural Engineering	2022
<b>Wildflower I</b>	Mississippi	34.5/230kV	100MVA	Electrical and Structural Engineering,	2022
<b>Solar Blue</b>	California	34.5/230kV	250MVA	Electrical and Structural Engineering	2022
<b>Chestnut</b>	California	34.5/230kV	150MVA	Electrical and Structural Engineering	2022
<b>Big Plain</b>	Ohio	34.5/138kV	196MVA	Electrical and Structural Engineering	2022
<b>Clearway</b>	California	34.5/240kV	800MVA	Electrical and Structural Engineering	2022
<b>Steel</b>	Utah	34.5/138kV	86.4MVA	Electrical and Structural Engineering	2022
<b>Rocket</b>	Utah	34.5/138kV	86.4MVA	Electrical and Structural Engineering	2021
<b>Castle</b>	Utah	34.5/69kV	46.8MVA	Electrical and Structural Engineering	2021



# Substations (PARTIAL LIST)

<b>Elektron</b>	Utah	34.5/138kV	86.4MVA	Electrical and Structural Engineering	2021
<b>Brazoria County</b>	Texas	34.5/138kV	226.8MVA	Electrical and Structural Engineering	2021
<b>Sandy Branch</b>	Texas	34.5/138kV	151.2MVA	Electrical and Structural Engineering	2021
<b>Brazoria West</b>	Texas	34.5/138kV	227.16MVA	Electrical and Structural Engineering	2021
<b>Muscle Shoals</b>	Alabama	34.5/161kV	252.4MVA	Electrical and Structural Engineering	2020
<b>Broad River</b>	North Carolina	34.5/115kV	57MVA	Electrical and Structural Engineering	2020
<b>Aquamarine</b>	California	34.5/230kV	320MVA	Electrical and Structural Engineering	2020
<b>Elara</b>	Texas	34.5/138kV	144.45MVA	Electrical and Structural Engineering	2020
<b>Pioneer</b>	Colorado	34.5/115kV	88.8MVA	Electrical and Structural Engineering	2019
<b>Taygete 1</b>	Texas	34.5/138kV	277.2MVA	Electrical and Structural Engineering	2019
<b>Taygete 2</b>	Texas	34.5/138kV	277.2MVA	Electrical and Structural Engineering	2019
<b>Prairie wolf</b>	Illinois	34.5/138kV	250MVA	Electrical and Structural Engineering	2019
<b>Drew</b>	California	34.5/230kV	110MVA	Electrical and Structural Engineering	2019
<b>Hunter</b>	Utah	34.5/138kV	110MVA	Electrical and Structural Engineering	2019
<b>Riverhead</b>	New York	34.5/138kV	22.2MVA	Electrical and Structural Engineering	2018
<b>Bonnie Mine</b>	Florida	34.5/69kV	41.67MVA	Electrical and Structural Engineering	2018
<b>Lakeview Airport</b>	Oregon	34.5/115kV	52.5MVA	Electrical and Structural Engineering	2018
<b>Lapetus</b>	Texas	34.5/138kV	111MVA	Electrical and Structural Engineering	2018
<b>Chestnut</b>	North Carolina	34.5/115kV	85MVA	Electrical and Structural Engineering	2017
<b>Bly</b>	Oregon	34.5/69kV	12.5MVA	Electrical and Structural Engineering	2017
<b>Mount Signal 2</b>	California	34.5/230kV	165MVA	Electrical and Structural Engineering	2017
<b>Gray Hawk</b>	Arizona	34.5/69kV	80MVA	Electrical and Structural Engineering	2016
<b>Alabama</b>	Alabama	34.5/115kV	90MVA	Electrical and Structural Engineering	2016



## **BLYMYER ENGINEERS' SERVICES INCLUDE:**

- Feasibility studies
- Site assessments
- Conceptual design
- Design development
- Detailed electrical design
- Construction/permitting
- Project management
- Construction management
- Commissioning process



## Wind Power (SAMPLE PROJECTS)



**Scheid Vineyards | Greenfield, CA |  
1.85 MW**



**Nestlé | Cabazon, CA |  
1.85 MW**



**Lac Prison | Lancaster, CA |  
1.85 MW**



**Dole | Soledad, CA |  
3 MW**



**Dole | Soledad, CA |  
9.6 MW**



**Dole | Soledad, CA |  
5.6 MW**

## Wind Power (SAMPLE PROJECTS)



**Mann Packing | Gonzales, CA |  
1.85 MW**

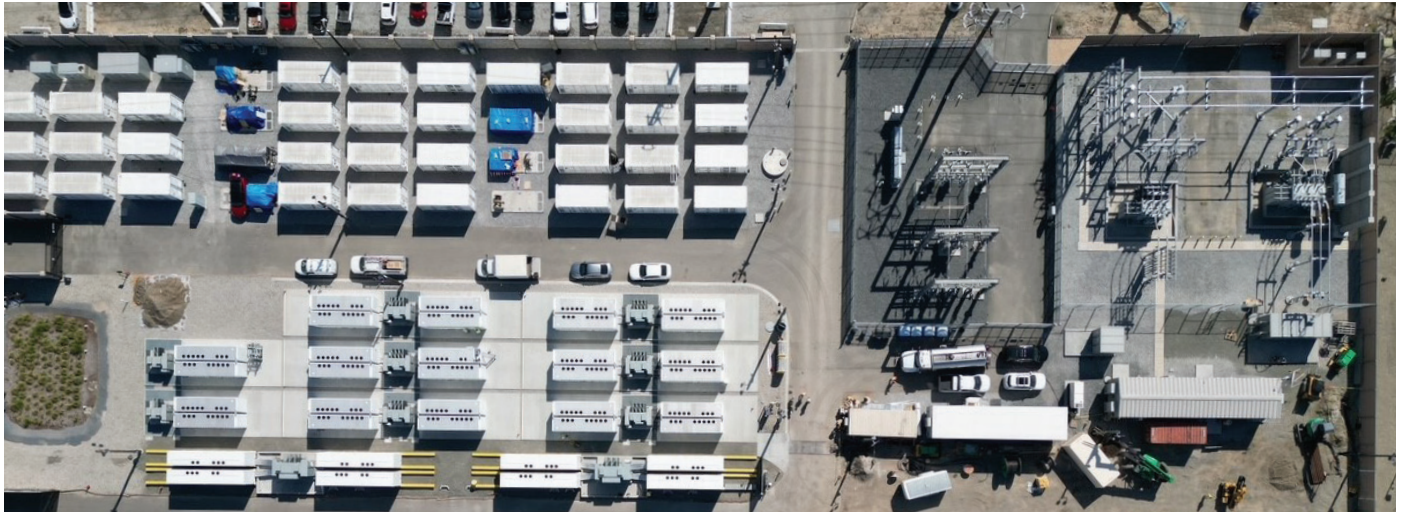
## Wind Power (PARTIAL LIST)

<b>Dole</b>	Soledad, CA	5.6MW	Electrical and Structural Engineering	2022
<b>Correctional Training Facility</b>	Soledad, CA	1.79MW	Electrical and Structural Engineering	2018
<b>Salinas Valley State Prison</b>	Soledad, CA	1.79MW	Electrical and Structural Engineering	2018
<b>Nestle</b>	Cabazon, CA	1.85MW	Electrical and Structural Engineering	2018
<b>Schied Vineyards</b>	Greenfield, CA	1.85MW	Electrical and Structural Engineering	2017
<b>LAC Prison</b>	Lancaster, CA	1.85MW	Electrical and Structural Engineering	2017
<b>Mann Packing</b>	Gonzales, CA	1.79MW	Electrical and Structural Engineering	2017

UPDATED: 8-01-2025



# BEI Construction



## A Sister Company Of Blymyer Engineers

If and when our clients require design/build services, Blymyer Engineers will work with BEI Construction, our affiliated firm, to provide turnkey services. BEI Construction is a California-licensed general building, engineering, and electrical contractor holding A, B, and C-10 licenses.

During the design/build process, we address design and construction questions early in the conceptual design phase to provide our clients with a seamless project. This relationship also results in BEI Construction's ability to offer services most construction companies cannot, including:

- Renewable: Solar/PV and Wind
- BESS/Energy Storage
- Data and technology infrastructure
- Audio/Visual
- Security
- Permit/Construction Management
- Electrical Contracting

### **Exceptional work across a range of disciplines**

The BEI Construction/Blymyer Engineers team, in addition to having solar expertise, has extensive experience providing design and design/build projects, including data center and head-end design as well as co-locations, battery back-up systems, back-up generators, and more. We have prepared room and building layouts, electrical design (both AC and DC systems), mechanical design, permitting, construction phase services, and as-builts.

(510) 521-3792

**BEIConstruction.com**

# Blymyer Engineers — Director of Engineering

## From the Director of Engineering



Step into the future of renewable energy with our pioneering company. At Blymyer Engineers, we have revolutionized the renewable landscape, enabling businesses and communities worldwide to harness the power of the sun and wind for a sustainable and clean energy future.

Our team of engineers are industry experts that bring a wealth of knowledge and experience to every project. We stay abreast of the latest technological advancements, incorporating cutting-edge innovations into our designs to enhance efficiency, streamline operations, and maximize energy output. When you partner with us, you gain access to a wealth of expertise that will give you a competitive edge in the market.

Our impressive portfolio of 24GW of engineered plants is a testament to our ability to deliver large-scale projects that exceed expectations in terms of efficiency, reliability, and environmental impact. We have successfully completed projects across diverse industries, from commercial and industrial installations to utility-scale power plants. Our clients trust us to deliver results that exceed their expectations, and we take pride in forging long-lasting partnerships built on trust, reliability, and shared success.

So, if you're ready to join the renewable revolution and unlock the full potential of renewable energy, look no further than Blymyer Engineers. With our unrivaled experience, innovative solutions, and dedication to sustainability, we are the ideal partner to help you harness the power of the sun and wind and drive your organization towards a brighter and greener future. Get in touch with us today and let's embark on this transformative journey together.

**Greg Mazur, P.E.**  
**Director of Engineering**







Founded in 1961, Blymyer Engineers has over 64 years of experience that is dedicated to your success.

Optimizing design for fast, economical installation.



We work around the clock for you.



**Blymyer Engineers, Inc.**

1101 Marina Village Parkway, Suite 100  
Alameda, CA 94501

**BLYMYER.COM**

(800) 753-3773

**Our Offices**

Alameda, California (HQ)  
Los Osos, California  
Sacramento, California  
San Diego, California  
Bend, Oregon  
Livingstone, Montana

Lakewood, Colorado  
Raleigh, North Carolina  
Lawrenceville, Georgia  
Nashville, Tennessee  
Fort Meyers, Florida  
Europe